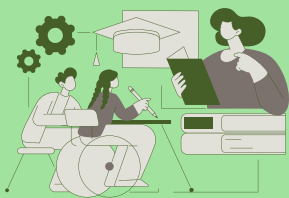
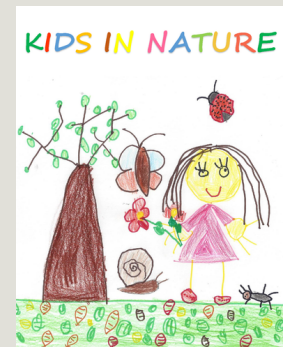
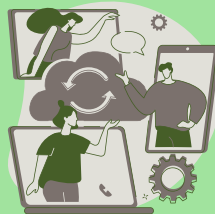


LONG-TERM PLAN FOR NATURE EDUCATION AT KINDERGARTENS



Integration into the Curriculum

The project's objectives, methodologies, and activities are incorporated into the regular curriculum of participating kindergartens. To achieve this „Nature Science Group“ will be established in the organizations. This integration ensures the continuation of nature-based education and sustainability practices.



Teacher Support

Providing ongoing professional peer support opportunities to teachers is crucial. Online sharing platforms can help educators stay updated with current practices in nature-based education and inspire them to continue implementing innovative approaches. Therefore, the project's web page and Facebook page will be kept active after the project has ended, for any interested teacher to share their activities and ideas and get inspired by other educators.



Community Involvement

Establishing partnerships with local environmental organizations, parks, and environmental educators creates a network of support for the kindergartens' nature-related activities. Regular collaborative initiatives, such as field trips and community events, will engage families, reinforce the importance of nature, and ensure long-term community involvement. Partner organizations aim to hold at least 1 nature-related event for the community per season (parents, staff, and other members).

Project Outputs shared online with downloadable free access pdf.

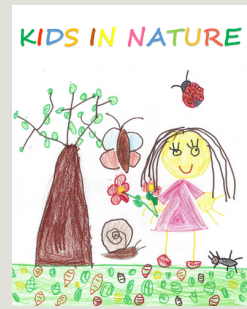
<https://www.kidsinnature.org/online/outputs>

Partners disseminate project's outputs on their organization's website or via their local authorities digital platforms.

Project results shared on the Erasmus+ Project Results Platform.

<https://erasmus-plus.ec.europa.eu/projects/search/details/2020-1-LT01-KA229-077835>

LONG-TERM EFFECTS OF PARTICIPATING IN "KIDS IN NATURE" PROJECT



Long-Term Effects for Organizations:

- **Institutional Advancement:** Participation and involvement in international projects enhance institutions' reputation and attract prospective students and families seeking nature-based education as well as staff with broader views and experiences.
- **Community Engagement and Partnerships:** such projects promote collaboration among kindergartens, local communities, and environmental educators. Establishing partnerships fosters community engagement and encourages sustainable practices beyond the project's scope.
- **Improved Project Management Skills:** Erasmus+ projects require effective project management. Participating in these projects enables the kindergarten's staff to improve their project management skills, including planning, coordination, budgeting, and evaluation. These skills can be applied to future projects within the organization.

Long-Term Effects for Students:

- **Environmental Awareness and Conservation:** The "Kids in Nature" project introduced children to the importance of nature, biodiversity, and sustainability. Through hands-on experiences and engaging activities, students develop a deep appreciation for the environment, fostering a sense of responsibility towards its preservation.
- **Cognitive and Emotional Development:** Outdoor activities stimulate children's curiosity, imagination, and problem-solving skills. Regular exposure to nature enhances cognitive abilities, creativity, and emotional well-being. These benefits contribute to long-term academic success and holistic development.
- **Health and Well-being:** Spending time in nature promotes physical activity, reduces stress levels, and enhances overall well-being. The project encourages a healthy lifestyle among students, leading to positive habits and improved long-term health outcomes.

Long-Term Effects for Participant Teachers:

- **Enhanced Pedagogical Skills:** The Erasmus+ project empowered participant teachers by providing a space to seek out resources on nature-based education, training and experience sharing. Teachers gained new teaching methodologies and tools, enabling them to create dynamic learning environments incorporating nature into their curricula. These enhanced skills continue to benefit teachers beyond the project's duration.
- **Professional Development & Networking Opportunities:** Participation in "Kids in Nature" broadens teachers' professional networks, allowing them to exchange ideas and experiences with educators from different countries. This collaboration fosters ongoing professional growth, encourages innovation, and strengthens the teaching community.